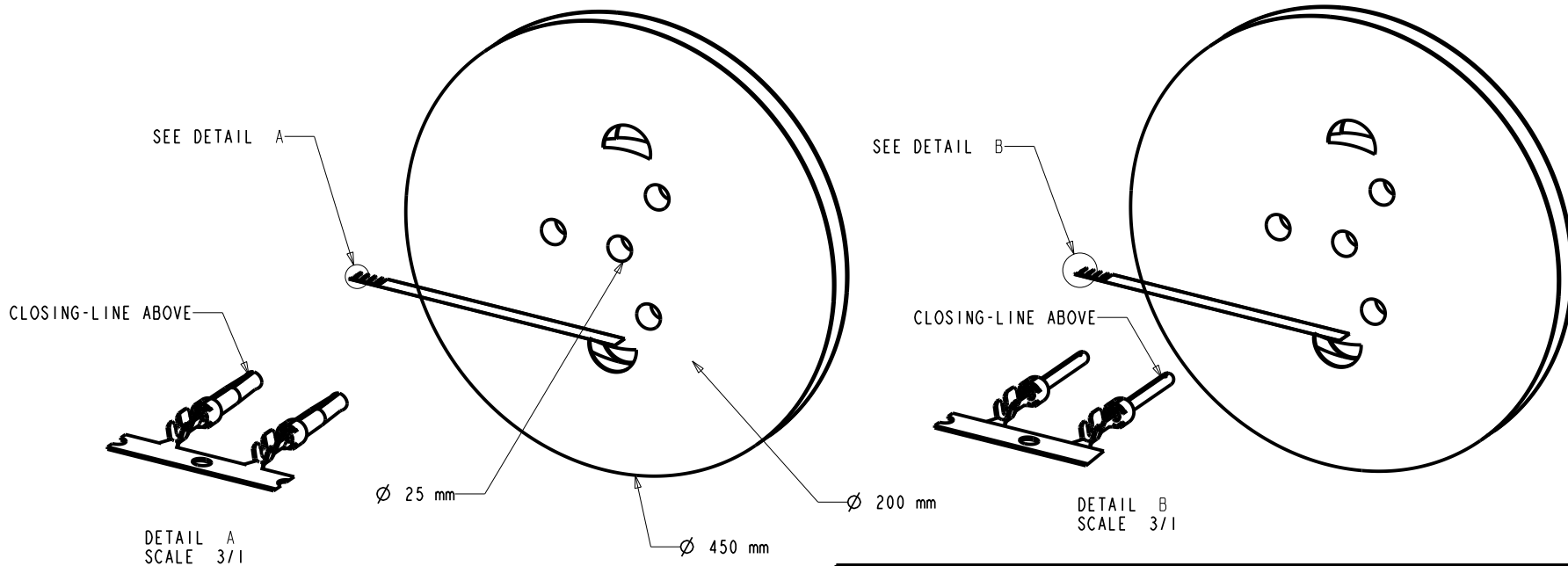


REFERENCE FOR REEL ACCORDING TO FEEDING DIRECTION

GAUGE	REEL OF 5000 FEMALE CONTACTS		REEL OF 10000 FEMALE CONTACTS	GAUGE	REEL OF 5000 PIN CONTACTS		REEL OF 10000 PIN CONTACTS
# 24-28	86566710064	86566710064LF	-----	# 24-28	86564710064	86564710064LF	-----
# 20-24	86566720064	86566720064LF	-----	# 20-24	86564720064	86564720064LF	-----
# 24-28	86566710065	86566710065LF	-----	# 24-28	86564710065	86564710065LF	-----
# 20-24	86566720065	86566720065LF	-----	# 20-24	86564720065	86564720065LF	-----
# 24-28	86566710067	86566710067LF	-----	# 24-28	86564710067	86564710067LF	-----
# 20-24	86566720067	86566720067LF	-----	# 20-24	86564720067	86564720067LF	-----



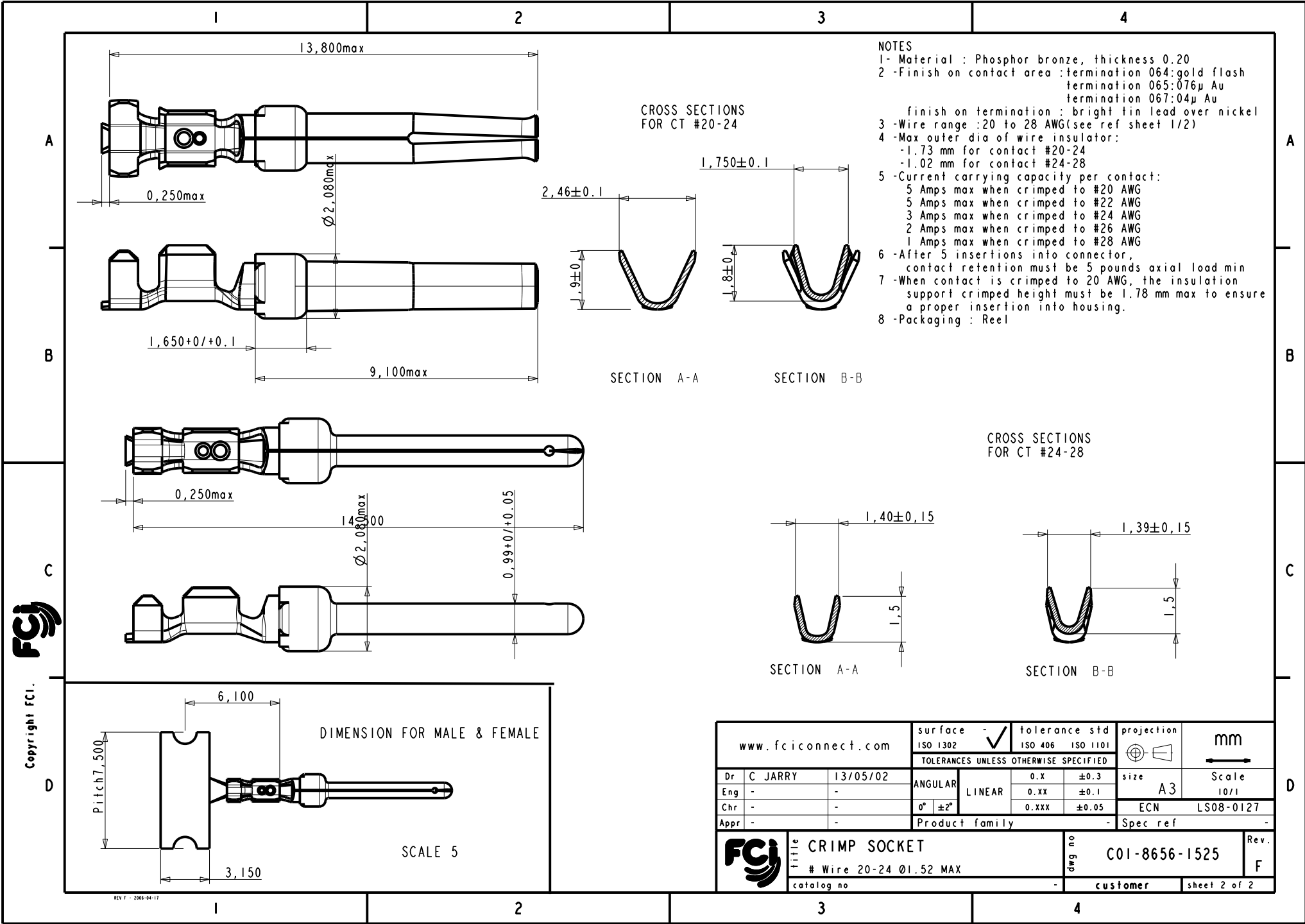
NOTE : ROHS INFORMATIONS
 The LF products meet European union directives and other country regulations as described in GS-22-008
 Terminations plating spec : 2um Nickel min + 2um Sn min
 Packaging Spec : see GS-14-920

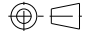
rev	ecn no	dr	date
E	LS06-196	MPE	27/11/2006
F	LS08-0127	MPE	2008/05/13
-	-	-	-
-	-	-	-
-	-	-	-
-	-	-	-

www.fciconnect.com		surface -	tolerance std	projection	mm
		ISO 1302	ISO 406 ISO 1101		
		TOLERANCES UNLESS OTHERWISE SPECIFIED			
Dr	C JARRY	13/05/02	ANGULAR	size A3	Scale 5/1
Eng	-	-	LINEAR	ECN	LS08-0127
Chr	-	-	0° ±2°	Product family	Spec ref
Appr	-	-			
		title CRIMP SOCKET		dwg no	C01-8656-1525
		# Wire 20-24 Ø1.52 MAX		customer	sheet 1 of 2
		catalog no		Rev.	F

Copyright FCI

REV F - 2008-04-17



www.fciconnect.com		surface - ISO 1302	tolerance std ISO 406 ISO 1101	projection mm
TOLERANCES UNLESS OTHERWISE SPECIFIED				
Dr	C JARRY	13/05/02	ANGULAR	size A3
Eng	-	-	LINEAR	Scale 10/1
Chr	-	-	0° ±2°	ECN LS08-0127
Appr	-	-	Product family	Spec ref
FCI	title CRIMP SOCKET		dwg no	Rev.
	# Wire 20-24 $\varnothing 1.52$ MAX		C01-8656-1525	F
	catalog no	-	customer	sheet 2 of 2